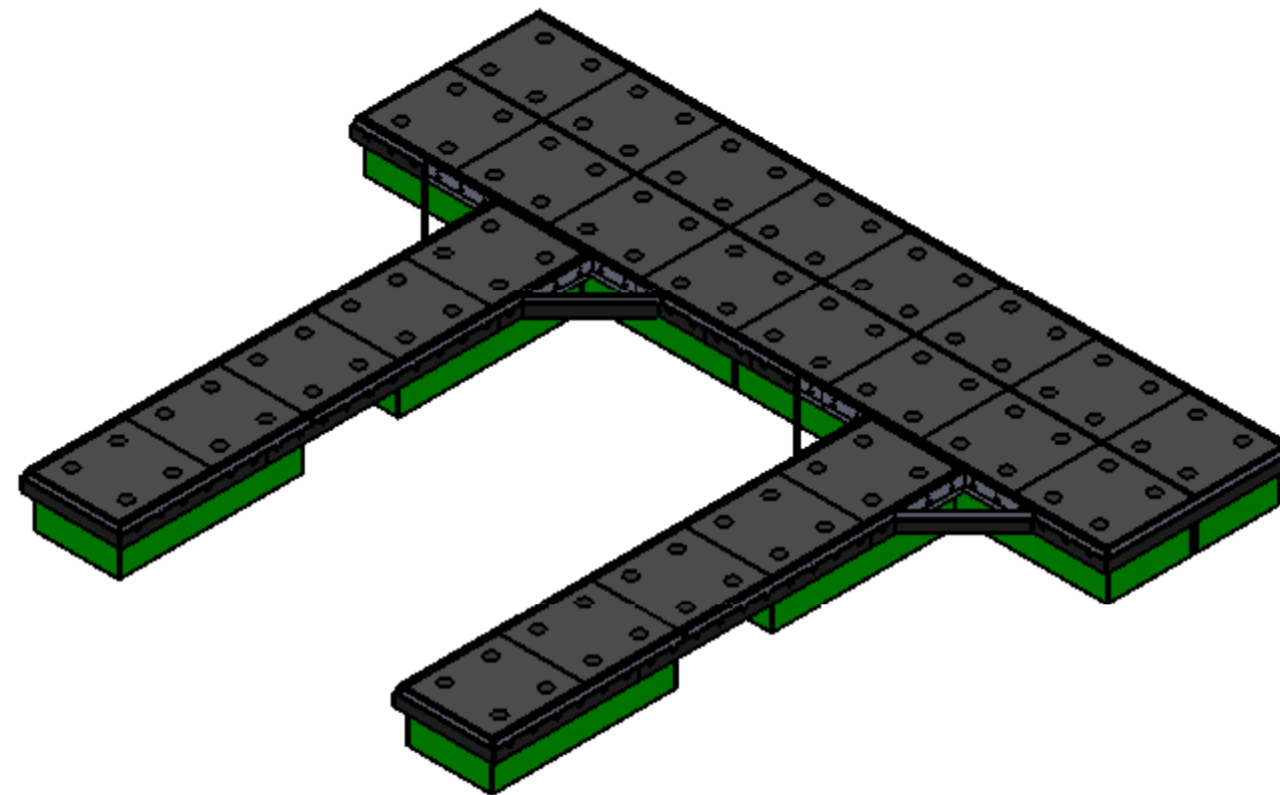
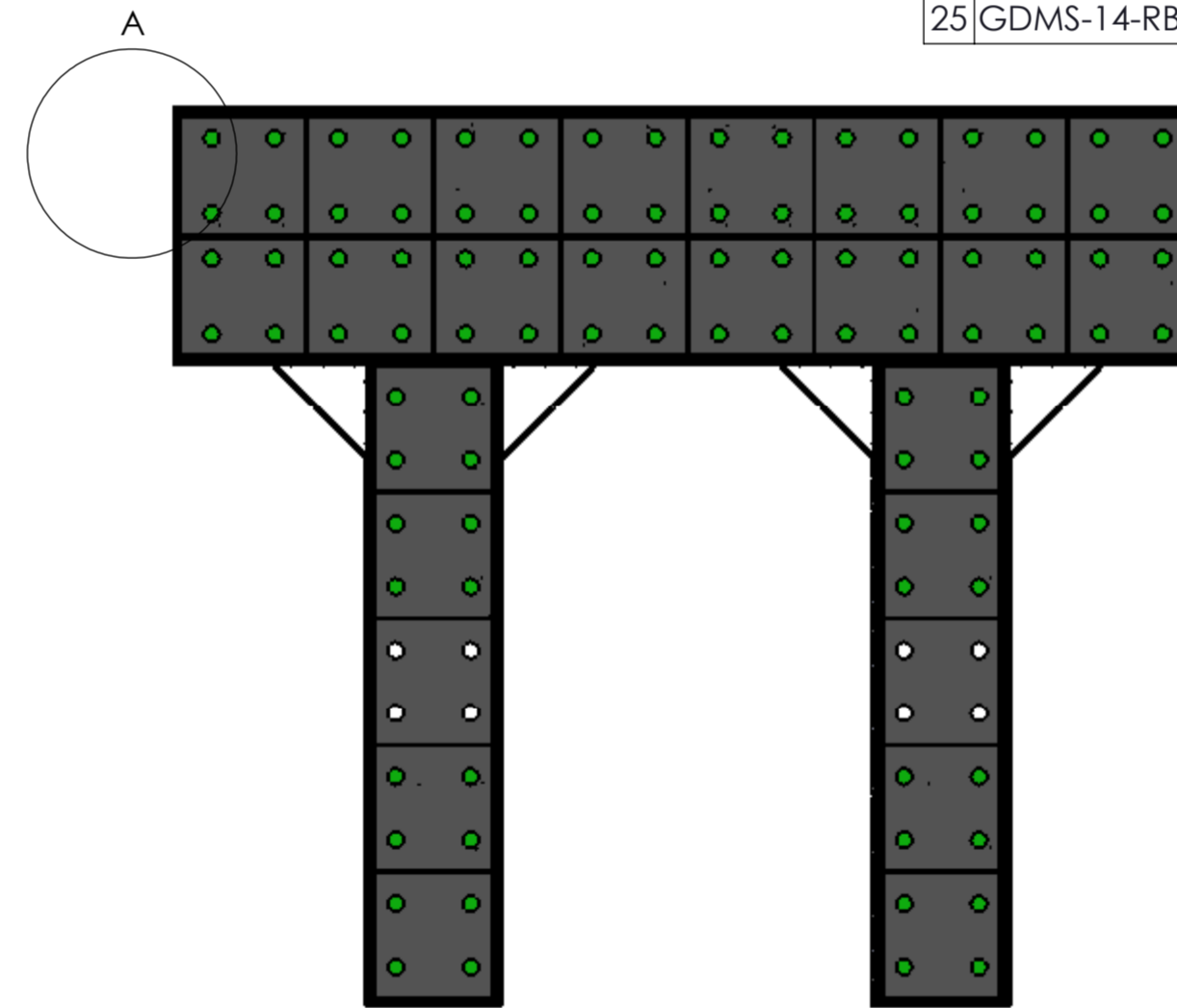
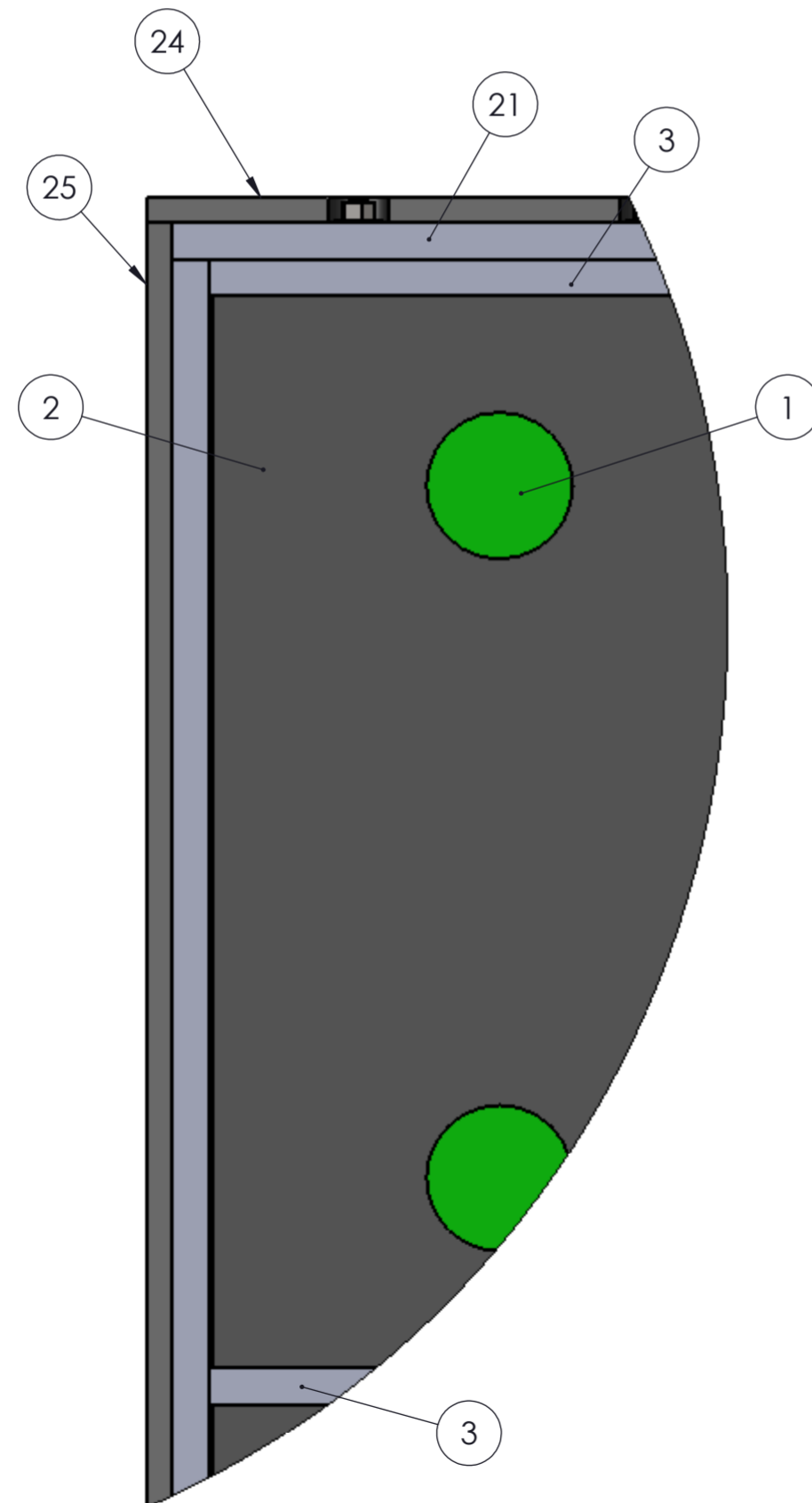



NOTE: Decking not shown for clarity



ID	PIECE	DESCRIPTION	QUANTITY
1	GDMS-13-FUS-032-044-095	Float	12
2	GDMS-13-MD-05.5-044-047	Structural Module	26
3	GDMS-13-DW-002-010-144	12' Whaler	14
4	GDMS-13-DW-002-010-096	8' Whaler	9
5	GDMS-14-AR-0.75-52	Rod	34
6	GDMS-13-NW-0.81-002-00.1	Washers	144
7	GDMS-13-HN-0.75-1.44-0.73	Nuts	144
8	GDMS-13-RB-1-6-96	Rub Strip	10
9	GDMS-13-RB-1-6-49	Rub Strip	4
10	GDMS-14-RB-1-6-12	Rub Strip	6
11	GDMS-14-FCR-0.75-97.375	Rod	20
12	GDMS-13-STKBRC-6x36x36	Knee Brace	4
13	GDMS-14-FCR-0.75-97.9	Rod	12
14	GDMS-14-DB-9.5-1.5-47	End Piece	2
15	GDMS-14-RB-1-6-24	Rub Strip	3
16	GDMS-14-AR-0.75-052.5	Rod	6
17	GDMS-14-DW-002-010-099	8' Whaler	4
18	GDMS-13-RB-1-6-120	Rub Strips	4
19	GDMS-14-RB-1-6-73	Rub Strip	4
20	GDMS-14-RB-1-6-50	Rub Strip	2
21	GDMS-14-DW-002-010-145.5	12' Whaler	4
22	GDMS-14-DB-2-10-92.5	End Piece	2
23	GDMS-13-RB2-1-6-39.5	Rub Strip	2
24	GDMS-13-RB-1-6-97	Rub Strip	2
25	GDMS-14-RB-1-6-95.5	Rub Strip	2



DETAIL A
DETAIL 1 : 7

				Drawn/Date September 27, 2014	Client Name: Configurations	 Global Dock & Marina Systems LLC. 233 33 rd Ave. North St. Petersburg, Florida 33704 Tel 1-800-420-9648
				Apprd./Date September 27, 2014		
Rev.	Description	By/Date	C.O. #	Design by: D.A.R.	Client Approval:	Description: Configuration C4 - Corner Detail
PROPRIETARY DESIGN				Drawn by: D.A.R.		Scale: 1:70
				Approve by: A.A.F.		Part No. Blue-Dock Floating Dock System